



AC2600 MU-MIMO Wi-Fi Range Extender

Works with any Wi-Fi Router[‡]



OneMesh™

RE650



Wi-Fi
Dead-Zone Killer



Uninterrupted
Streaming



4 × 4
MU-MIMO



Gigabit
Ethernet Port

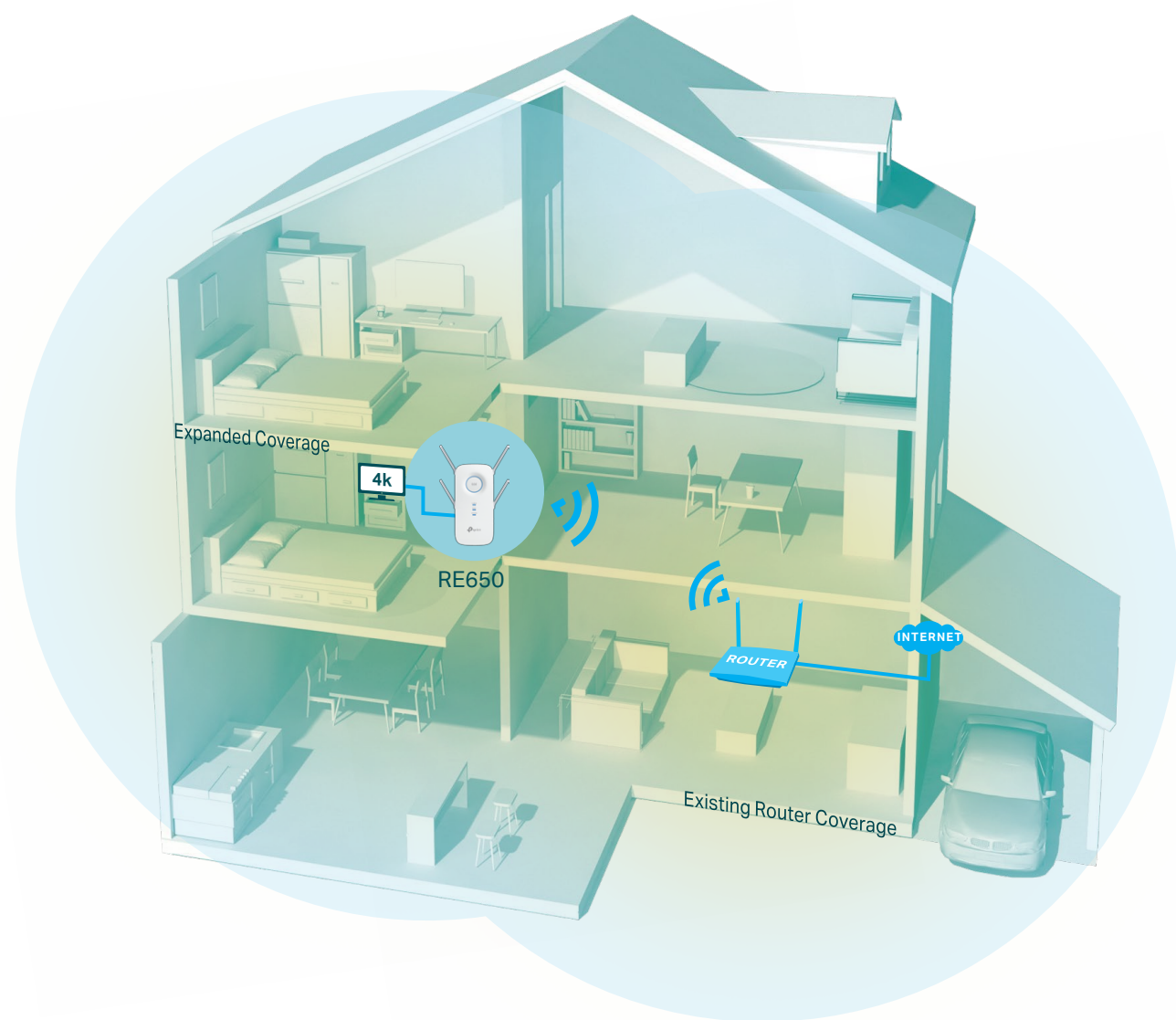


Easy Setup
via Tether App

Highlights

Eliminate Wi-Fi Dead Zones with Powerful Wi-Fi

The AC2600 MU-MIMO Wi-Fi Range Extender connects to your router wirelessly, strengthening and expanding its signal into areas it can't reach on its own, achieving speeds of 800 Mbps on the 2.4 GHz band and 1733 Mbps on the 5 GHz band.†



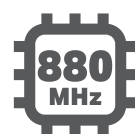
8-Stream Dual Band

Separate 2.4 GHz and 5 GHz Wi-Fi bands allow more devices to connect to your network without reducing performance.



4 × 4 MU-MIMO

Improves overall speed and Wi-Fi throughput with 4× faster performance by simultaneous communication to multiple devices.△



Dual-Core CPU

Power through multiple complex tasks with ease, delivering fast and stable overall performance



Beamforming Technology

Send targeted Wi-Fi signal to individual devices for stronger connection and farther coverage.



Access Point Mode

Create a new Wi-Fi access point to enhance your wired network with Wi-Fi capability.



Easy Setup and Management

Via the WPS button / Tether app / Web UI.

Highlights

More Than A Traditional Wi-Fi Extender

Connect with any Wi-Fi router to boost your Wi-Fi range or to a OneMesh™ router to create a mesh network for seamless whole-home coverage.



Wi-Fi Dead-Zone Killer

Eliminate weak signal areas with Wi-Fi coverage for the whole house.



One Wi-Fi Name

Stay connected to the same network name in every room.



Unified Management

Manage your mesh network from the Tether app or web UI.



Uninterrupted Streaming^s

Enjoy uninterrupted streaming, surfing, and more—even when moving around your home.



Check the full list of OneMesh™ extenders and routers at <https://tp-link.com/onemesh/compatibility>

*More compatible devices coming soon

AC2600 Mesh Wi-Fi Extender

An Intelligent Signal light helps you quickly find the best location to install the range extender.



Strong Signal



Weak Signal



Four External Antennas

Establish stronger connections and greater Wi-Fi coverage.

Secure One-touch Connection (WPS)

Instantly connect to the router with the touch of the WPS button.

Gigabit Ethernet Port

Provides high-speed wired access, ideal for your high-bandwidth needs.



PC



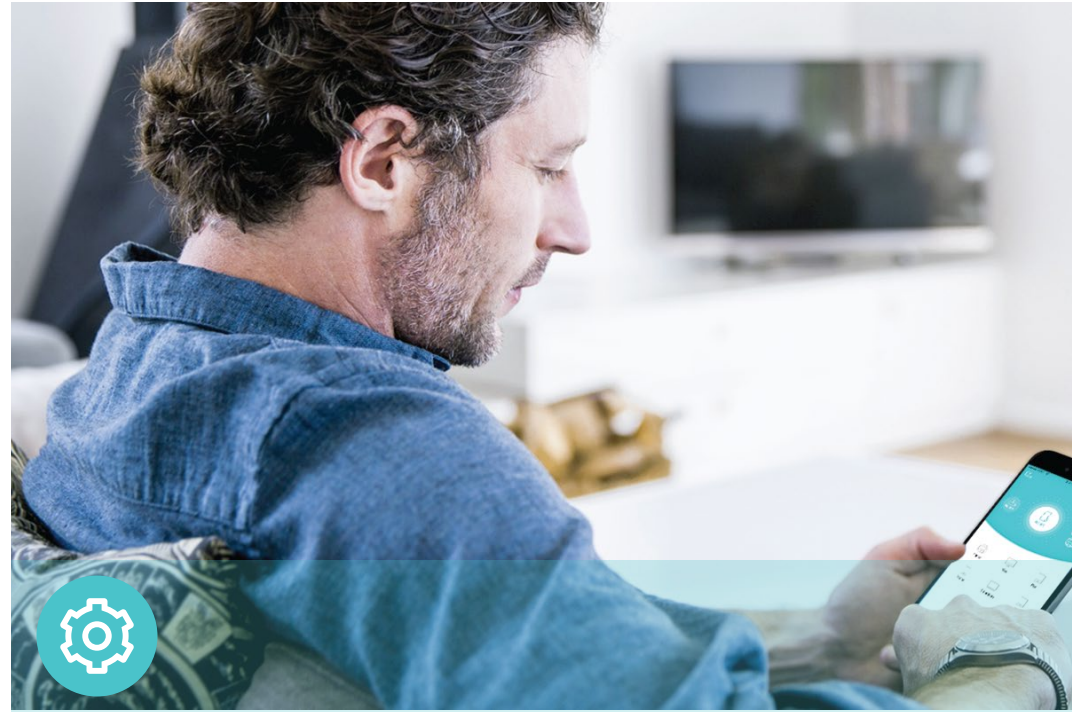
Game Console



Smart TV



Features



Ease of Use

- Intuitive Web UI – Ensures quick and simple installation without hassle.
- Fast Encryption – One-touch wireless security encryption with the WPS button
- Easy On/Off – LED On/Off button allows users to turn LED on or off
- Hassle-free Management with Tether App – Network management is made easy with the TP-Link Tether App, available on any Android or iOS device
- Online Upgrade – Keeps you informed of the latest firmware and allows online updating on the web UI



Speed

- Ultimate Wireless Speed – Combined wireless speeds of up to 800 Mbps (over 2.4GHz) and 1733 Mbps (over 5GHz)
- MU-MIMO Technology – Simultaneously exchange data with several devices, achieving speeds which are 4× faster than standard AC extenders
- Support 802.11 ac – Provides a data transfer rate 3 times faster than 802.11n for each stream
- Dual-core CPU – 880MHz dual-core CPU makes multi-tasking easy and boosts data transfer rate



Reliability

- Simultaneous Dual Band – Separate Wi-Fi bands enable more devices to connect to your network without a drop in performance
- Reliable Connection – Four adjustable external antennas for optimal Wi-Fi coverage and reliable wireless connections

Specifications

Hardware

- Ethernet Port: 1 10/100/1000Mbps RJ45 Port
- Button: WPS Button, Reset Button, LED On/Off Button, Power On/Off Button
- Antenna: 4 External Antennas
- Power Consumption: CE: 15W
- Dimensions (L × W × H): 163×86×40mm



Wireless

- Wireless Standards: IEEE 802.11a/n/ac 5GHz, IEEE 802.11b/g/n 2.4GHz
- Frequency: 2.4GHz and 5GHz
- Signal Rate: 800Mbps at 2.4GHz, 1733Mbps at 5GHz
- Transmit Power: CE: <20dBm(2.4GHz), <23dBm(5GHz)
- Reception Sensitivity:
5GHz:
11a 6Mbps: -96dBm, 11a 54Mbps: -78dBm,
11ac VHT20 MCS8:-73dBm, 11ac VHT40 MCS9:-68dBm,
11ac VHT80 MCS9:-64dBm
2.4GHz:
11g 6Mbps: -96dBm, 11g 54Mbps: -79dBm,
11ac VHT20 MCS8: -74dBm, 11ac VHT40 MCS9: -69dBm
- Wireless Function: Enable/Disable Wireless Radio, Wireless Statistics
- Wireless Security: 64/128-bit WEP, WPA-PSK/WPA2-PSK encryptions

Others

- Certification
CE, RoHS
- System Requirements
Microsoft Windows 98SE, NT, 2000, XP, Vista™ or Windows 7, 8, 8.1, 10, MAC OS, NetWare, UNIX or Linux
Internet Explorer 11, Firefox 12.0, Chrome 20.0, Safari 4.0, or other Java-enabled browser
- Package Contents
AC2600 Wi-Fi Range Extender RE650
Quick Installation Guide



For more information, please visit

<http://www.tp-link.com/en/products/details/RE650.html>

or scan the QR code left

Attention: This device may only be used indoors in all EU member states and EFTA countries.

Specifications are subject to change without notice. All the brands and product names are trademarks or registered trademarks of their respective holders.

*Maximum wireless signal rates are the physical rates derived from IEEE Standard 802.11 specifications. Actual wireless data throughput and wireless coverage are not guaranteed and will vary as a result of network conditions, client limitations, and environmental factors, including building materials, obstacles, volume and density of traffic, and client location.

†The product may not be compatible with routers or gateways with firmware that has been altered, is based on open source programs, or is non-standard or outdated.

‡Uninterrupted Streaming is designed for devices that support the 802.11k/v standard.

§Use of MU-MIMO requires clients to also support MU-MIMO.

©2022 TP-Link

www.tp-link.com

TP-Link AC2600 MU-MIMO Wi-Fi Range Extender RE650