

NielsenIQ Brandbank

Coffee Mate The Original 550g



EAN

8445290856296

Target market(s)

GB, IE

Components

Ingredients

Glucose Syrup

Palm Kernel Oil

MILK Proteins

Stabilisers (E331, E452)

Acidity Regulator (E340)

Emulsifiers (E471, E472e)

Anti-Caking Agent (E170)

Colour (Riboflavin)

Nutrition

	Per 100ml**	Per mug**	% RI*
Energy	77kJ	157kJ	
	19kcal	38kcal	2%
Fat	1.1g	2.2g	3%
of which: saturates	0.8g	1.7g	9%
Carbohydrate	1.9g	3.8g	1%
of which: sugars	0.3g	0.7g	1%
Fibre	0.3g	0.6g	-
Protein	0.1g	0.3g	<1%
Salt	0.03g	0.06g	1%

*Reference Intake of an average adult (8400kJ/2000kcal)

**One mug (2 heaped tsp (6.5g) Coffee-Mate® + 1 tsp (1.8g) soluble coffee + 200ml water); used as basis for per 100ml

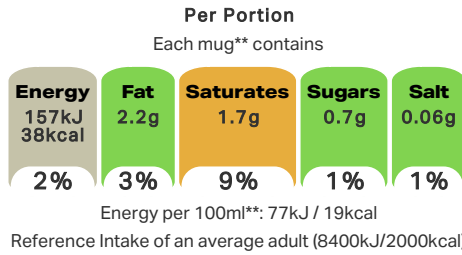
Makes 84 mugs

Calculated Nutrition

	Per 100ml	Per mug
Energy (kJ)	77	157
Energy (kcal)	19	38
Fat (g)	1.1	2.2
of which saturates (g)	0.8	1.7
Carbohydrate (g)	1.9	3.8

of which sugars (g)	0.3	0.7
Fibre (g)	0.3	0.6
Protein (g)	0.1	0.3
Salt (g)	0.03	0.06

Front of Pack Nutrition



**One mug (2 heaped tsp (6.5g) Coffee-Mate® + 1 tsp (1.8g) soluble coffee + 200ml water); used as basis for per 100ml

Nutrition Other Text

Reference Intake of an average adult (8400kJ/2000kcal)

One mug (2 heaped tsp (6.5g) Coffee-Mate® + 1 tsp (1.8g) soluble coffee + 200ml water); used as basis for per 100ml

Makes 84 mugs

Reference Intake Statement

Reference Intake Statement - Reference Intake of an average adult (8400kJ/2000kcal)

HFSS Indicator

HFSS Indicator - Not HFSS

Product Description

Alternative Description

Supplier Preferred Product Name - Coffee Mate Original Coffee Whitener 550g

Brand

Coffee Mate

Manufacturer Brand

Brand - Nestlé

Features

Smooth & creamy taste

Classic for a reason

Low fat & sugar when prepared

Suitable for Vegetarians

Standardised Brand

Brand - Coffee Mate

Regulated Product Name

Whitener for hot beverages.

Marketing

Company Name

Nestlé UK / Nestlé Ireland

Company Address

Nestlé UK,
PO Box 207,
York,
YO91 1XY.

Nestlé Ireland,
3030 Lake Drive,
Citywest,
Dublin 24.

Product Marketing

Classic for a Reason.

Brand Marketing

Coffee Mate takes your coffee to the next level of rich deliciousness that makes every mug taste creamier than you ever dreamed.

Other Information

© Reg. Trademark of Society des Produits Nestlé S.A.

Further Description

Past my date?
Look, smell, taste
Don't waste

Nutritional Claims

Low fat & sugar when prepared

Health & Lifestyle

Lifestyle

- Low Fat
- Suitable for Vegetarians

Allergy Advice

Milk - Contains

Storage & Usage

Storage Type

Type

Ambient

Preparation and Usage

1 Add 2 heaped teaspoons** to your coffee.

2 Stir and enjoy its smooth, silky taste.

**One mug (2 heaped tsp (6.5g) Coffee-Mate® + 1 tsp (1.8g) soluble coffee + 200ml water); used as basis for per 100ml.

Storage

Best before end see base

After opening, store in a cool, dry place. To enjoy the product at its best, consume within 2 months.

Durability after Opening

Consume Within - Months

2

Date Marking Type

- Best Before

Brandbank Captured Pack Data

Pack Size

550g e

Numeric Size

Numeric Size - 550

Recycling Info

Can - Recycle
Cap - Recycle
Foil - Recycle

Pack Type

Type - Can

Recycling Scheme

- OPRL

Recycling Other Text

Dispose of Responsibly
Please Recycle Me

Usage Count

Number of uses - Servings

84

Usage Other Text

Makes 84 mugs

Customer Supplied Pack Data

Supplied Dimension

Shelf Height (mm) (mm)	Shelf Width (mm) (mm)	Shelf Depth (mm) (mm)
148	99	99

(GS1 package measurement rules)

Supplied Weight

Gross Weight (g) - 599

Supplied Unit Merchandising

Height - 148
Width - 99
Depth - 99
Unit Stable - Yes
Unit Stackable - Yes
Merchandise Multiple Ways - No

Supplied Shelf Ready Pack

Unit Count - 6

Supplied Case

Height - 150
Width - 214
Depth - 321
Weight - 3630
Unit Count - 6
GTIN - 08445290856289

Customer Services

Manufacturers Address

Nestlé UK,
PO Box 207,
York,
YO91 1XY.

Nestlé Ireland,
3030 Lake Drive,
Citywest,
Dublin 24.

Return To

Contact Us Free
UK 0800 58 57 59
ROI 00800 6378 5385
www.nestle.co.uk
Nestlé UK,
PO Box 207,
York,
YO91 1XY.

Nestlé Ireland,
3030 Lake Drive,
Citywest,
Dublin 24.

Telephone Helpline

UK 0800 58 57 59
ROI 00800 6378 5385

Web Address

www.nestle.co.uk

Extended Data

Description Breakdown

Functional Name - Whitener for hot beverages
Variant - The Original

Packaging Weight

Tub - Grams

598.5

Hand Separable

Hand Separable - True

